

2 3/4" BACKSET MORTISE LOCK TEMPLATE

FOR LEVER X LEVER OR KNOB X KNOB
SEE OTHER SIDE FOR OPPOSITE TEMPLATE

NOTE: Template may not be true-to-size. Please use for reference purposes only. DO NOT drill until measurements are verified.

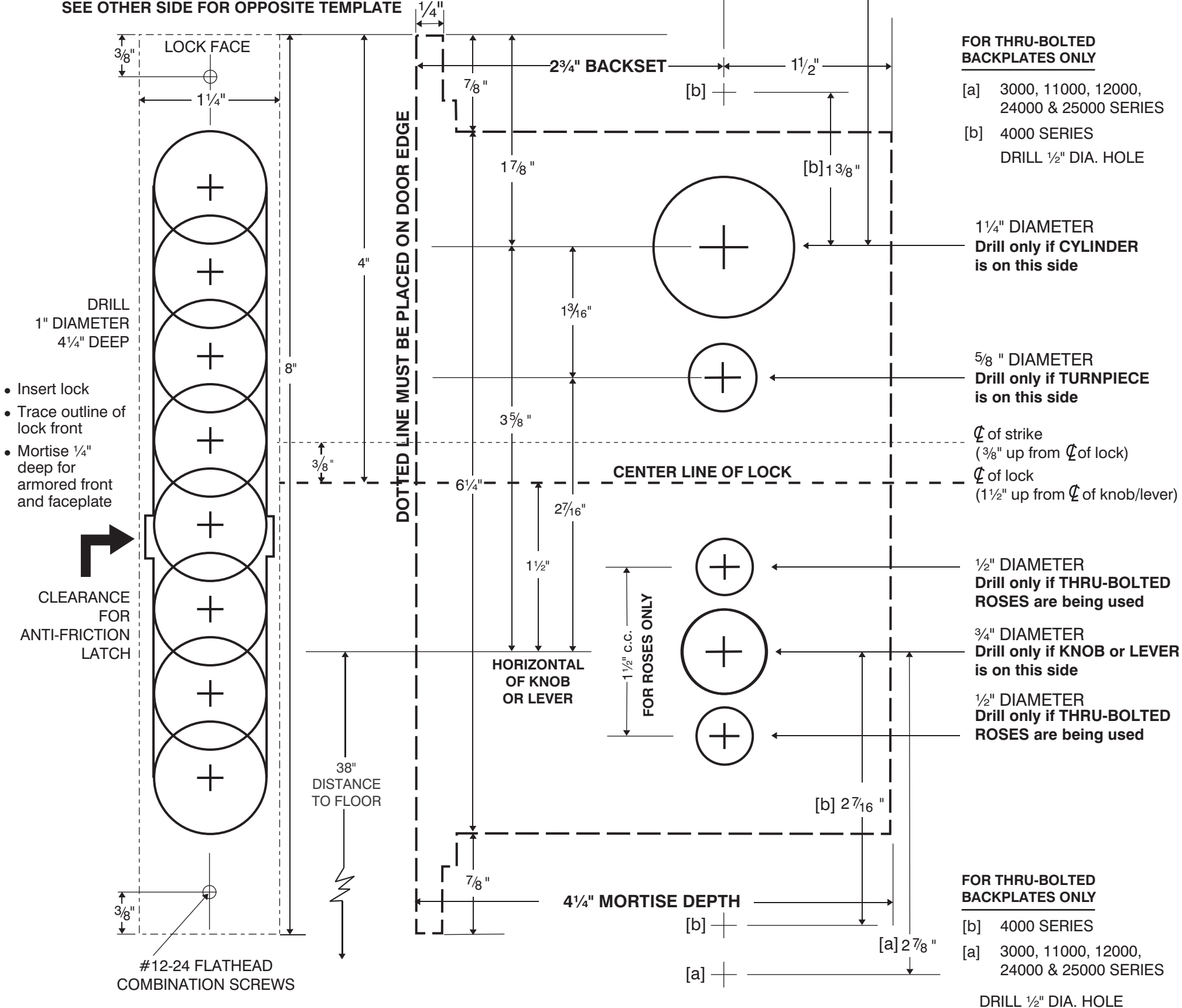


DIAGRAM #1

MORTISE STRIKE INSTALLATION INSTRUCTIONS

- 1) Locate center line of strike by taking the center line of the mortise lock case and going up 3/8" and making a line on the jamb.
- 2) Position the center line of the strike onto the line and using the strike as a guide trace the edge of the strike.
- 3) Mortise the jamb 3/32" deep for the strike.
- 4) When box strike **is used** a minimum of 1" mortise depth is needed.
- 5) When box strike is **not used** be sure to mortise deep enough to allow the latchbolt and deadbolt to fully extend.

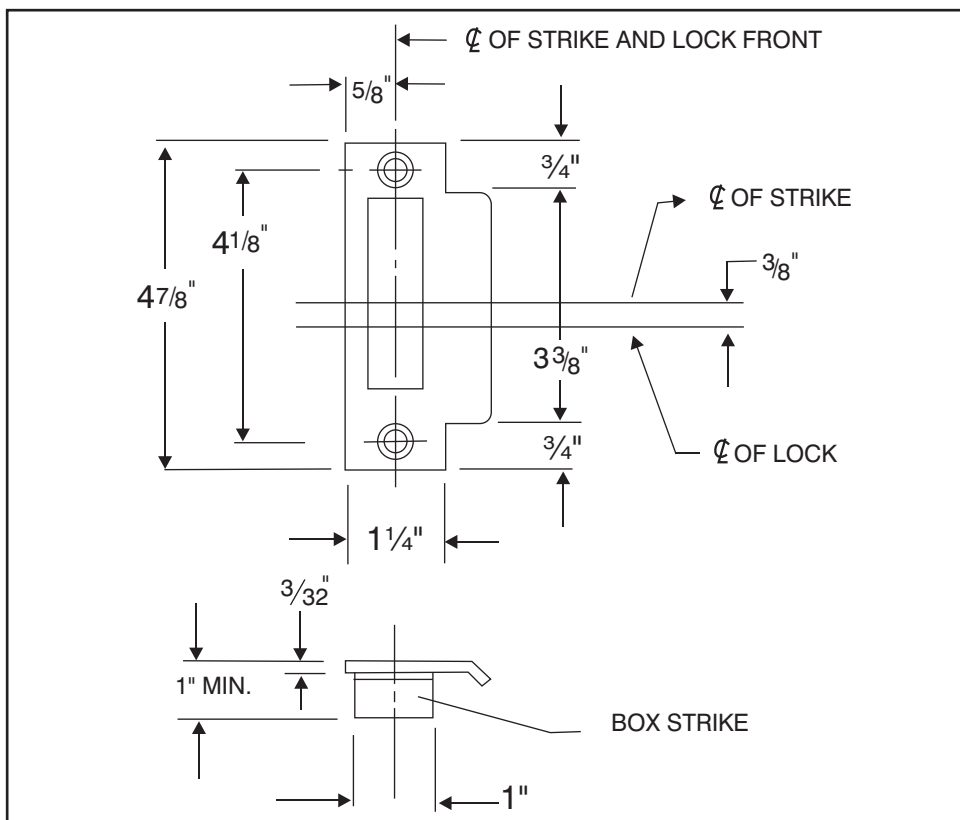


DIAGRAM #2

FUNCTION HOLES TO DRILL

Function	Cyl. Hole outside	Cyl. Hole 2 sides	Turnpiece inside	Knob hole 2 sides	Cam type
A	X		X	X	C
AC		X		X	C
B	X		X	X	C
E	X			X	S
EW	X			X	S
F	X		X	X	C
FW	X		X	X	C
G		X		X	*
H	X		X	X	C
J	X			X	S
L			Both Sides	X	
N				X	
PD					
SD					

Key: C = Cloverleaf S=Straight Cam

* = Straight cam inside, Special cam outside.



CEDAR GROVE, NJ 07009

OM-ML234A-00

Rev.1/6/11