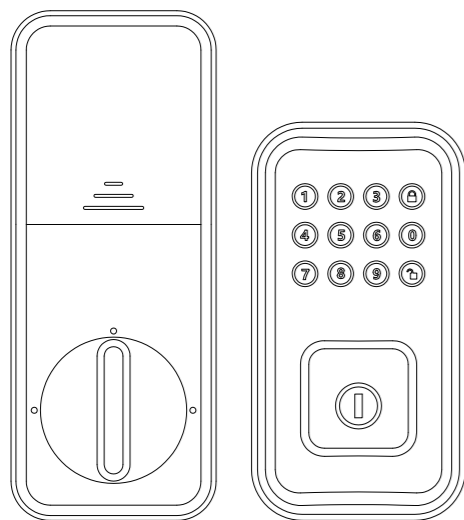


COMNIA

SMART LOCK

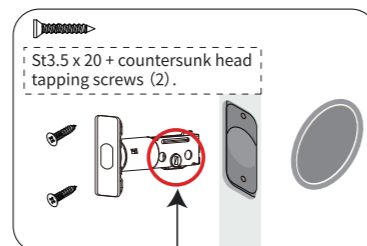
Installation Instructions



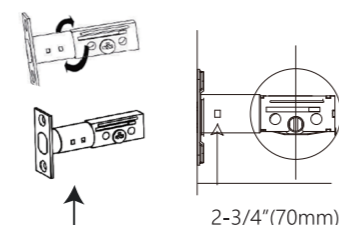
ITEM NO.3111



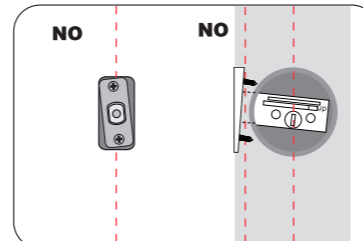
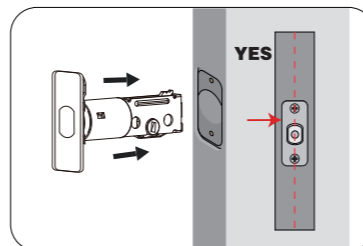
Install the latch and strike



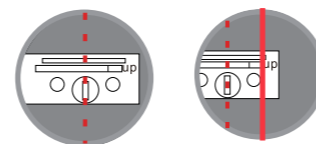
Make sure the T-shape hole is in the bottom position.



Twist the latch and adjust the bolt length (Make sure the latch bolt is retracted).

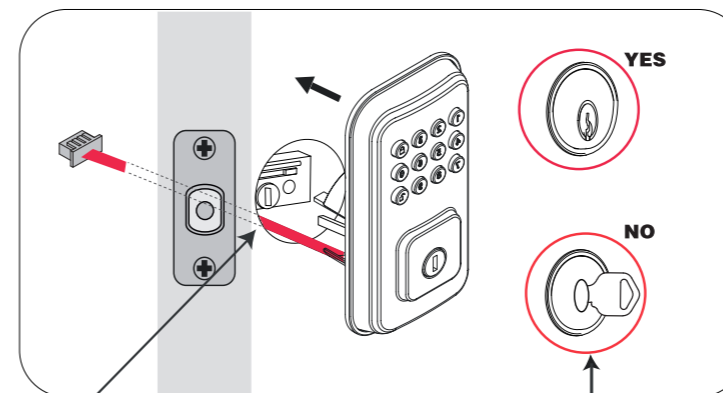


YES **NO**



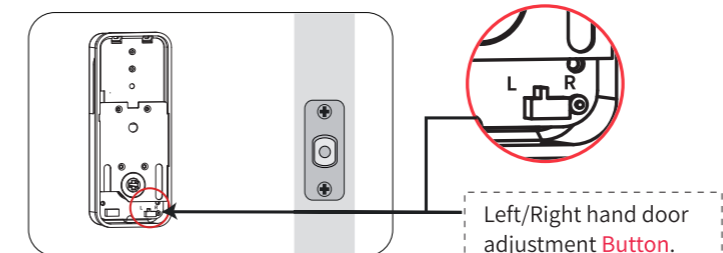
Install the exterior assembly

⚠ Keep the latch in unlocked position before installation.



⚠ **Attention:**
Tailpiece going through the latch
Must be installed **vertically**.

The key must be pulled out when installing.

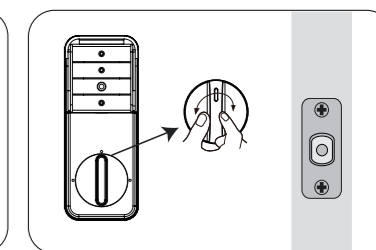
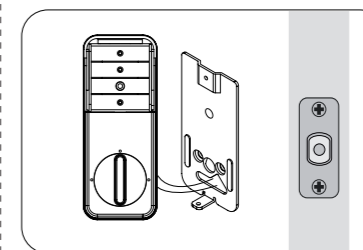


Install the interior assembly

⚠ Do not load batteries until lock is completely installed.

5. Tighten screws evenly.

6. Test the Lock.



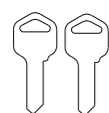
Test the lock by rotating the turnpiece to see if the bolt can be extended and retracted smoothly.

Parts identification

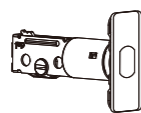
Exterior Assembly



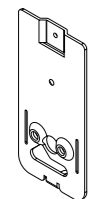
Entry Key



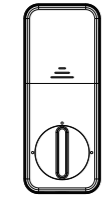
Latch



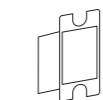
Mounting Plate



Interior Assembly



Dust Box



Mounting Screws

× 5
St3.5 x 20 + countersunk head tapping screws (5)
M6 x 55 +countersunk head screws (2)

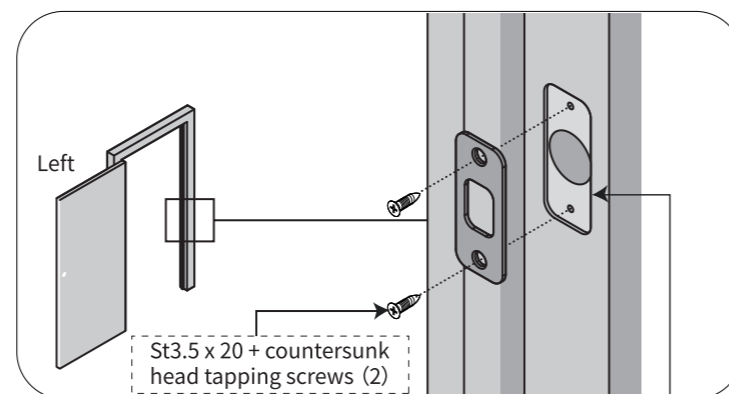
Strike Plate



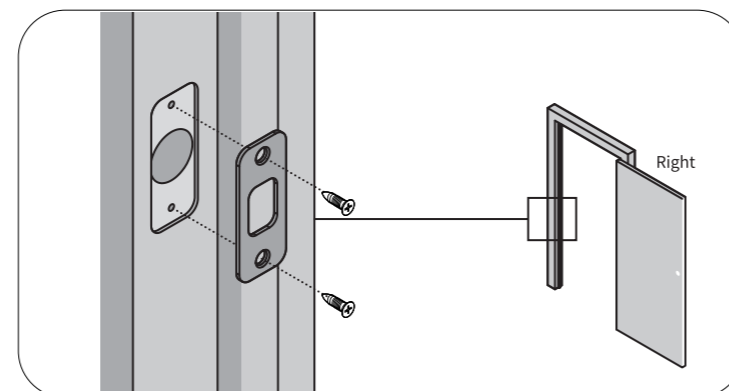
Screws

Cross countersunk Head (2)

Install the latch and strike



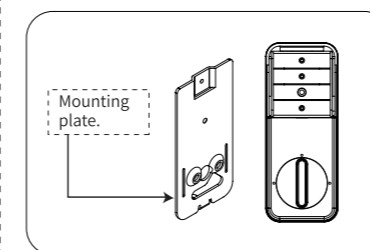
Make sure the hole in the door frame is drilled a minimum of 1"(25mm) deep.



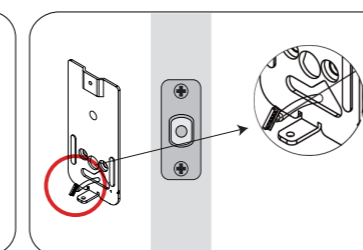
Install the interior assembly

⚠ Do not load batteries until lock is completely installed.

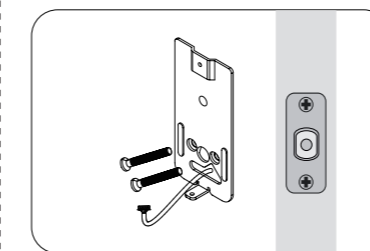
1.Take off the Mounting plate.



2.Route cable through the bottom of mouting plate.

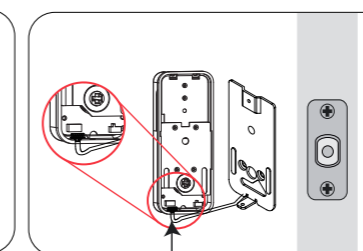


3. Tighten screws evenly.



NOTE :
Please support exterior assembly during mounting plate installation.

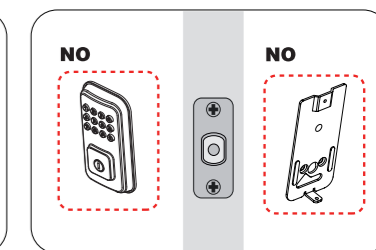
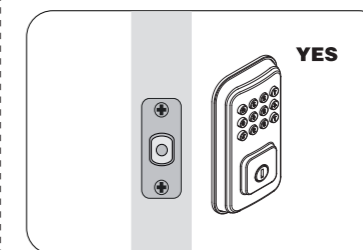
4. Ensure tight cable connection.



The smooth side of the plug should be at the bottom.

Installation test

⚠ Programming after successful installation testing.



Load battery to test installation by key and default master code.
Default master code: 123456.

NOTE :

★ Insert key and test latch. If latch does not extend or retract smoothly, please adjust mounting plate screws.

★ If the keypad and mounting plate are not straight, please loosen mounting plate screws and adjust.